

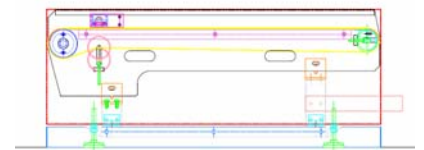
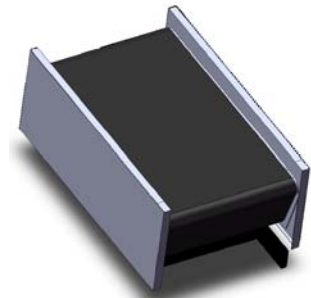
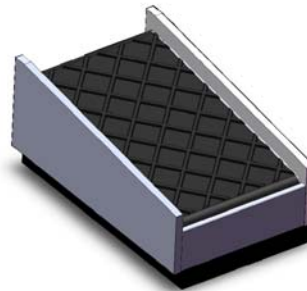


**Airport Equipment**

**List**

**"Baggage Handling Systems"**

## 1 Check-in (Weighing - Labelling - Injection)



This equipment exists in several versions:

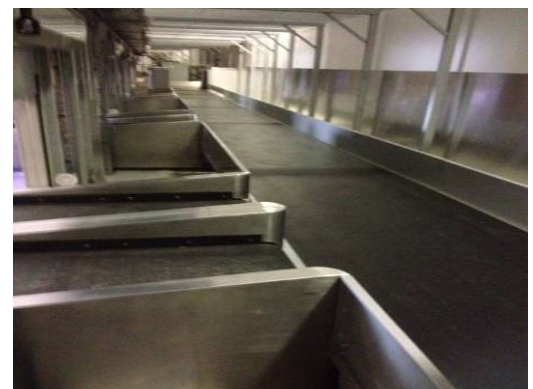
- Brushed and polished stainless steel finish (grain size 220)
- Epoxy painted steel (choice of colour)
- PVC and/or modular belt (flame resistant)
- Drive motor drum and/or gearmotor
- Double display with or without accumulated weight
- ...



## 2 Collector Conveyor

This equipment exists in several versions:

- Brushed and polished stainless steel finish (grain size 220)
- Epoxy painted steel (choice of colour)
- Horizontal conveyor
- PVC belt without grip and with or without guides (flame resistant)
- Drive motor drum and/or gearmotor
- Crossed or single tension motorisation
- ...



### 3 Rolling Shutter « Check-in Security »

This equipment exists in several versions:

- Automated and secure shutting and opening
- Integrated in the baggage handling process
- Adaptable for single and double check-in
- Anodised aluminium finish
- Epoxy painted steel (choice of colour)
- With or without maintenance crank
- Conform to « Public Area » :  
Legislation Anti crushing > 15 daN
- ...

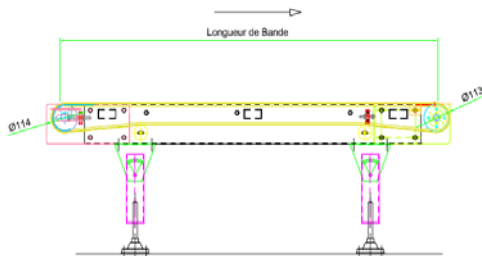


## 4 Standard Conveyors

### 4.1 Short Conveyors

This equipment exists in several versions:

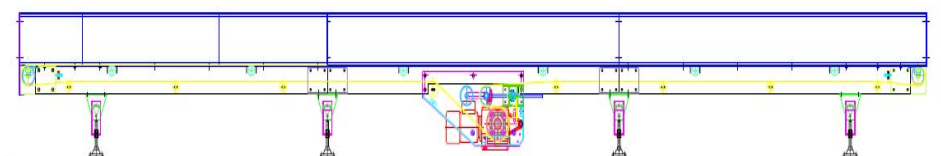
- Brushed and polished stainless steel finish (grain size 220)
- Epoxy painted steel (choice of colour)
- Horizontal or inclined conveyor
- Transit conveyor or Injector conveyor
- Guided or non-guided PVC belt (flame resistant)
- Drive motor drum and/or gearmotor
- ...



### 4.2 King size conveyors

This equipment exists in several versions:

- Brushed and polished stainless steel finish (grain size 220)
- Epoxy painted steel (choice of colour)
- Horizontal or inclined conveyor
- With or without grip structure PVC belt (flame resistant)
- Crossed or single tension motorisation
- ...

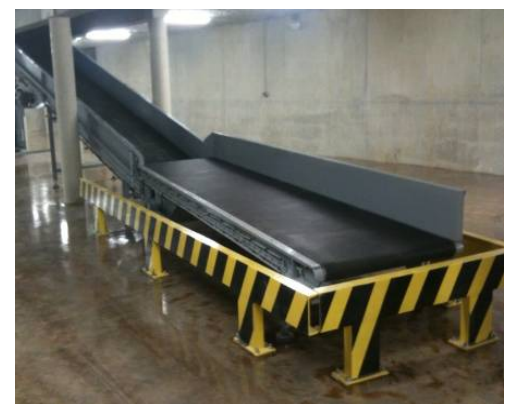
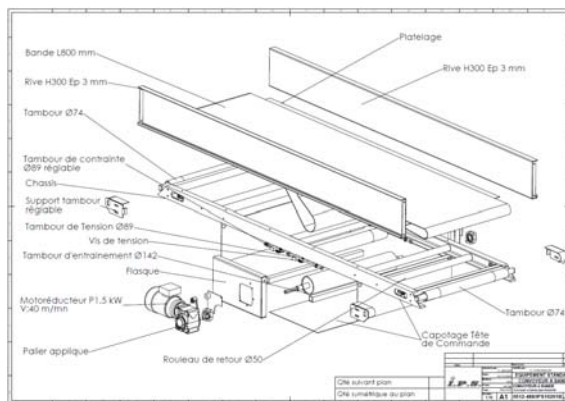
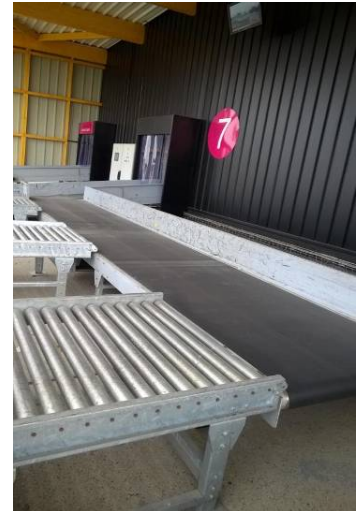




### 4.3 Unloading conveyors

This equipment exists in several versions:

- Epoxy painted steel (choice of colour)
- Hot or cold galvanized steel
- Guided or non-guided non-grip PVC belt (flame resistant)
- Crossed or single tension motorization
- Bande PVC lisse guidée ou non (ISO340)
- Drive motor drum and/or gearmotor
- Reinforced structure for this particular function
- ...

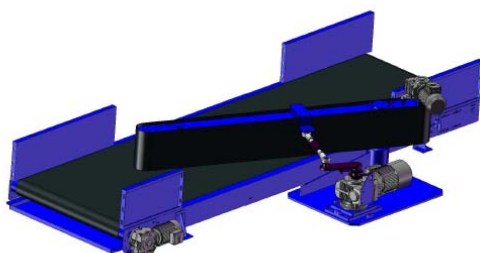


## 5 Special convoyeurs

### 5.1 Parallel pusher

This equipment exists in several versions:

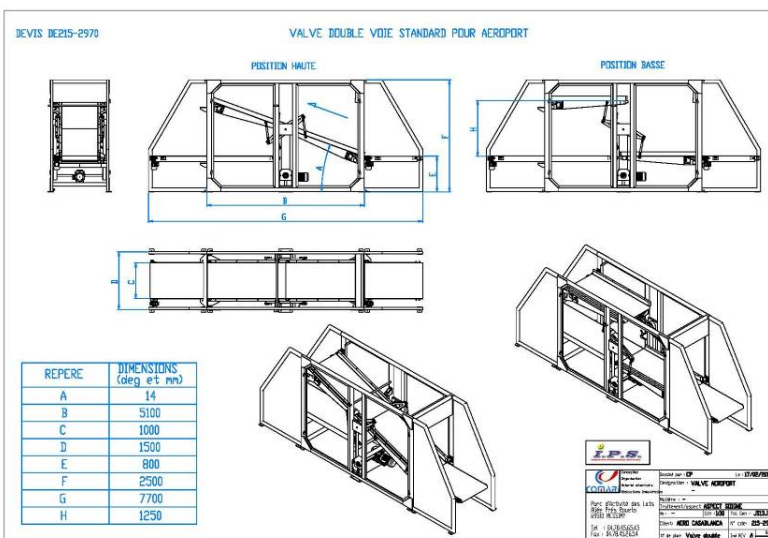
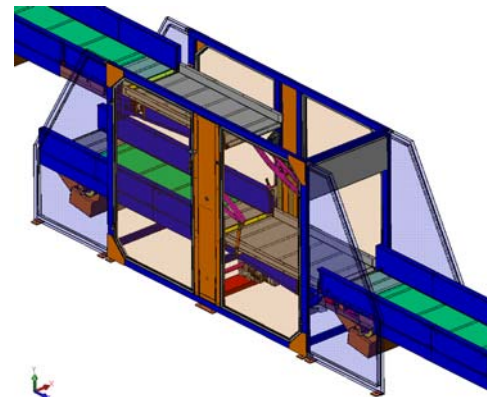
- Suspended or on the floor
- Epoxy painted steel (choice of colour)
- Vertical belt conveyor
- PVC belt with grip and guided (flame resistant)
- Drive motor drum and/or gearmotor
- Movement: mecanic action
- Capacity: 1 800 bags / hour
- ...



## 5.2 Vertical Transfer Unit

This equipment ensures vertical sortation between 2 levels and provides the following advantages:

- Principal flow, flat transfer (no elevation)
- Large capacity: 2 500 bags / hour
- Epoxy painted steel (choice of colour)
- PVC belt with grip and guided (flame resistant)
- Drive motor drum and/or gearmotor
- Transfer movement: connecting rod/notched belt association
- Integrated electrical system with speed variator
- ...



## 6 X-Ray integration

This equipment ensures the integration of X-Ray process control in baggage handling systems:

- Ensures baggage tracking
- Conform to system advancing process
- Epoxy painted steel (choice of colour)
- PVC belt with or without grip and guided or not (flame resistant)
- Drive motor drum and/or gearmotor
- Ergonomic system for the security operators
- Integration of baggage morphology with size control
- ...



## 7 Roller conveyor

### 7.1 Free Roller Conveyor

This equipment exists in several versions:

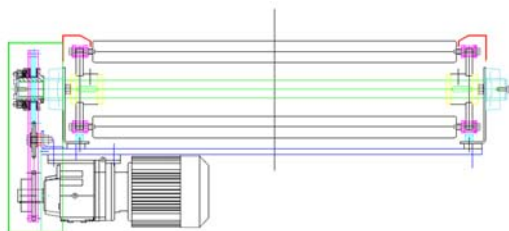
- Brushed and polished stainless steel finish (grain size 220)
- Epoxy painted steel (choice of colour)
- Horizontal or inclined conveyor
- PVC or steel rollers
- With or without sideguard
- ...



### 7.2 Driven Roller Conveyor

This equipment exists in several versions:

- Brushed and polished stainless steel finish (grain size 220)
- Epoxy painted steel (choice of colour)
- Horizontal or inclined conveyor
- Steel chain driven rollers (low pressure)
- With or without sideguard
- With or without torque overload safety / limitator
- ...

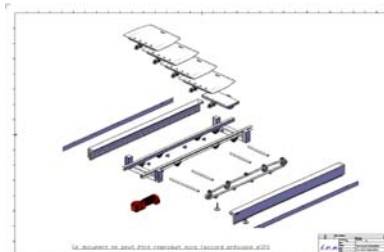
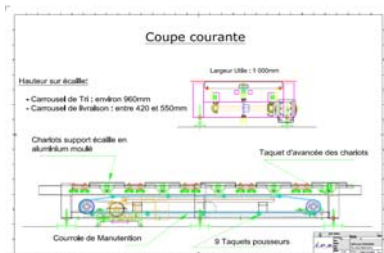
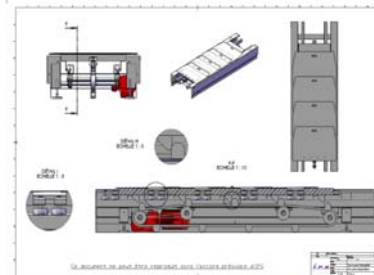
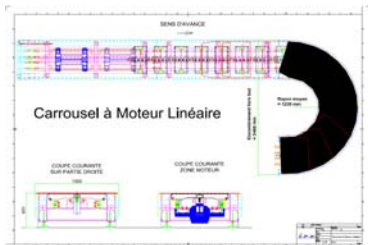
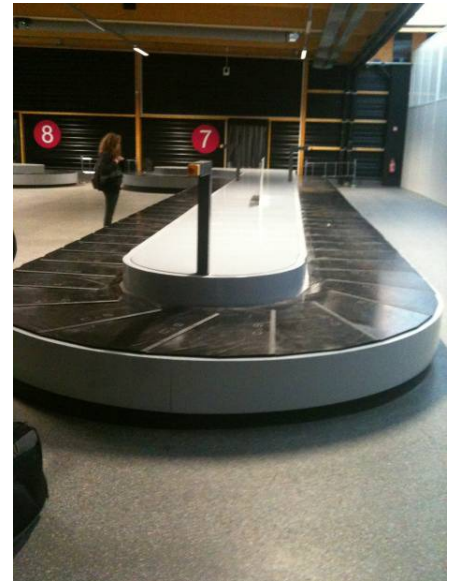




## 8 Baggage Reclaim Carousels

This equipment exists in several versions:

- System for arrivals and departures
- 3 possible motorisations:
  - **Caterpillar system**
  - **Friction system,**
  - **Linear Motors system**
- Brushed and polished stainless steel finish
- Epoxy painted steel (choice of colour)
- Aluminium molded trolley plate support  
Pitch: 500 mm
- PVC plates (flame resistant)
- ...
- ...





## 9 Structure & Steel Frame

This equipment exists in several versions:

- Hot or cold galvanized steel
- Epoxy painted steel (choice of colour)
- Conception calculations certified by an Accredited Control Organism
- With or without anti-slip wood flooring, steel sheet or metal grating
- With or without guardrails
- ...

